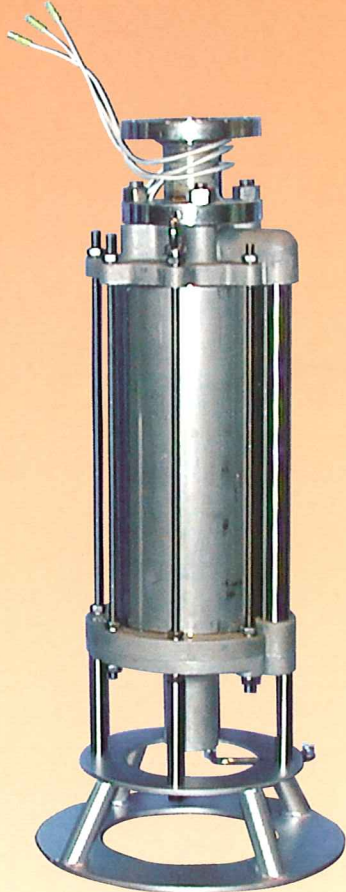


## Variable Speed Cryogenic Pump for Liquid Transfer Pump

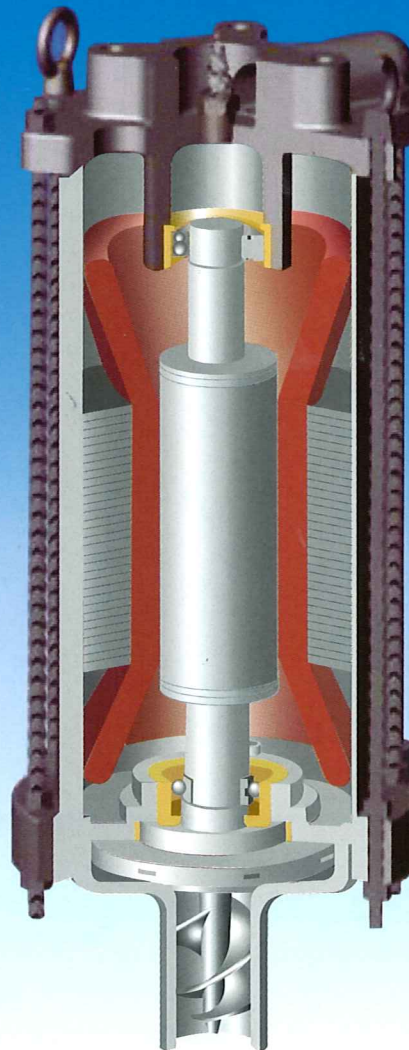


### *Features*

- No dynamic seals and fully submerged fixed and variable speed electric motor
- Suitable for Class 1, Div 1, Installation per USNEC (NFPA-70-2002)
- Low NPSH R characteristics
- No scheduled maintenance

### *Applications*

- Vehicle Fueling Stations (LNG)
- LPG / LNG / LN2 / LAR Transfer Pumps
- Dual Fuel Engine Feed Pumps
- Vaporizer Feed Pumps for LNG / LPG Satellite Stations



Pump Model	62020L1-P7.5R	62020L1-P15R
Capacity / Differential Head	2.5 – 24 m <sup>3</sup> /h / 195m (Max.) 4 – 102 gpm / 640ft (Max.)	
Pump Speed	Maximum 7200 rpm	
Design Pressure	3 MPaG	
Voltage Input	3 Phase 380 – 460 V	
Motor Output (Wet Motor)	7.5kW	15kW
Inverter Output	11kW	18.5kW
Pump Material	Aluminum / Stainless Steel	

Mass	Pump / Motor		55 kg
	Terminal Header / Junction Box		20 kg
	Options	Suction Casing / Head Plate	180 kg
Inverter		–	

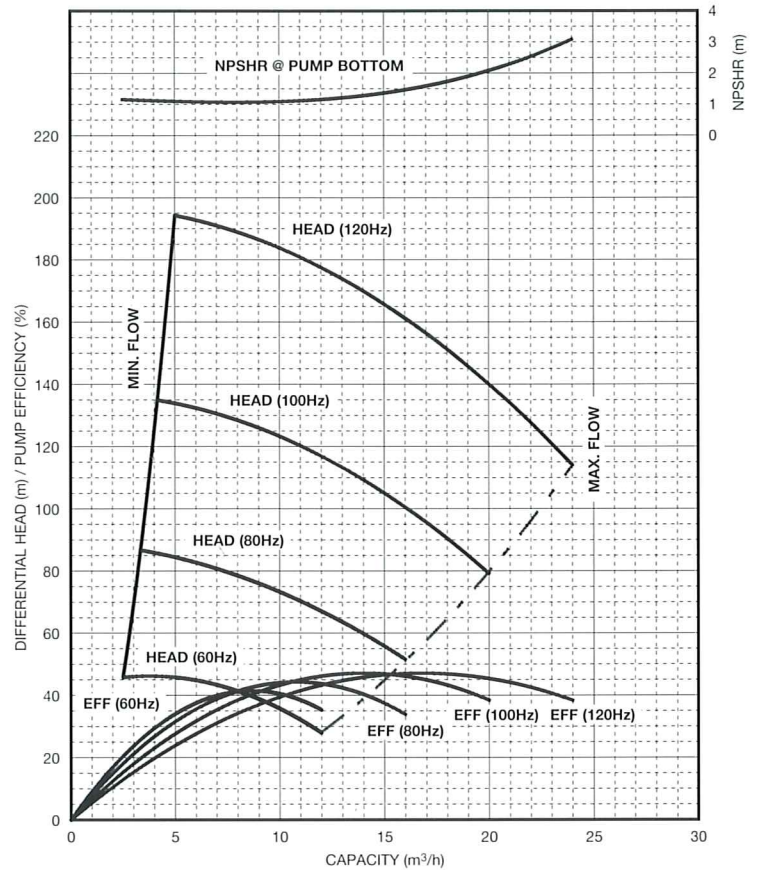
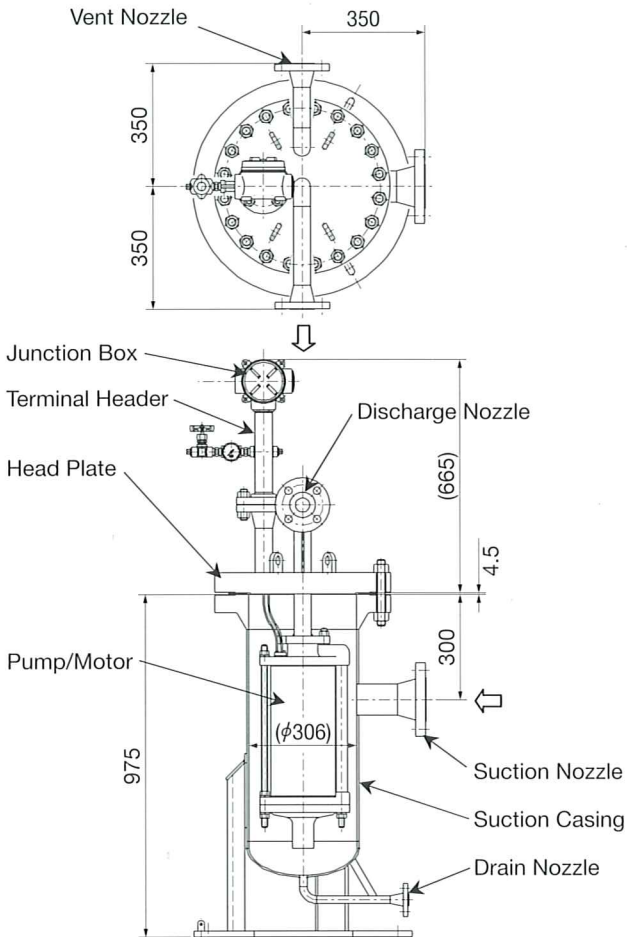
Connections	Suction Nozzle	ANSI CLASS300 3" RF
	Discharge Nozzle	ANSI CLASS300 2" RF

## Product Scope

- Submerged electric motor  
– No dynamic seals
- Advanced centrifugal pump design
- Proven impeller technology
- Helical high solidity Inducer for low NPSHR
- Dual seal electrical penetration with explosion proof junction box suitable for Class 1, Div 1 locations per USNEC (NFPA-70)

## Options

- ASME suction vessel
- Vacuum jacket on suction vessel
- Adjustable speed motor control
- Vibration sensing



## NIKKISO CO., LTD.

Cryogenic Pump Division: 16-2, Noguchi-cho, Higashimurayama, Tokyo 189-8520, Japan  
Telephone: +81-42-392-3548 Facsimile: +81-42-392-3549

## NIKKISO CRYO, EUROPE

Fountain Court, 2 Victoria Square Street, St. Albans, Hertfordshire AL1 3TF U.K.  
Telephone: +44-1727-884-949 Facsimile: +44-1727-884-800

## NIKKISO CRYO, INC.

4661 Eaker Street, North Las Vegas, NV 89081-2746, U.S.A.  
Telephone: +1-702-643-4900 Facsimile: +1-702-643-0391